



M.A.M. SCHOOL OF ENGINEERING

(ACCREDITED BY NAAC)

(Approved by AICTE, New Delhi and Affiliated to Anna University, Chennai)

SIRUGANUR, TRICHY - 621 105

www.mamse.in

7.1.4 Water conservation facilities available in the Institution:

1. Rain water harvesting
2. Borewell /Open well recharge
3. Construction of tanks and bunds
4. Waste water recycling
5. Maintenance of water bodies and distribution system in the campus

RAIN WATER HARVESTING



PRINCIPAL
PRINCIPAL



M.A.M. SCHOOL OF ENGINEERING

(ACCREDITED BY NAAC)

(Approved by AICTE, New Delhi and Affiliated to Anna University, Chennai)

SIRUGANUR, TRICHY - 621 105

www.mamse.in

BOREWELLS



College
M School
Engineering
Google

Tiruchirappalli, Tamil Nadu, India
MAM college campus, Tamil Nadu 621105, India
Lat 10.99837°
Long 78.778187°
23/12/21 03:39 PM

PRINCIPAL

PRINCIPAL
M.A.M. SCHOOL OF ENGINEERING
SIRIGANUR, TIRUCHIRAPPALLI-621 105.



M.A.M. SCHOOL OF ENGINEERING

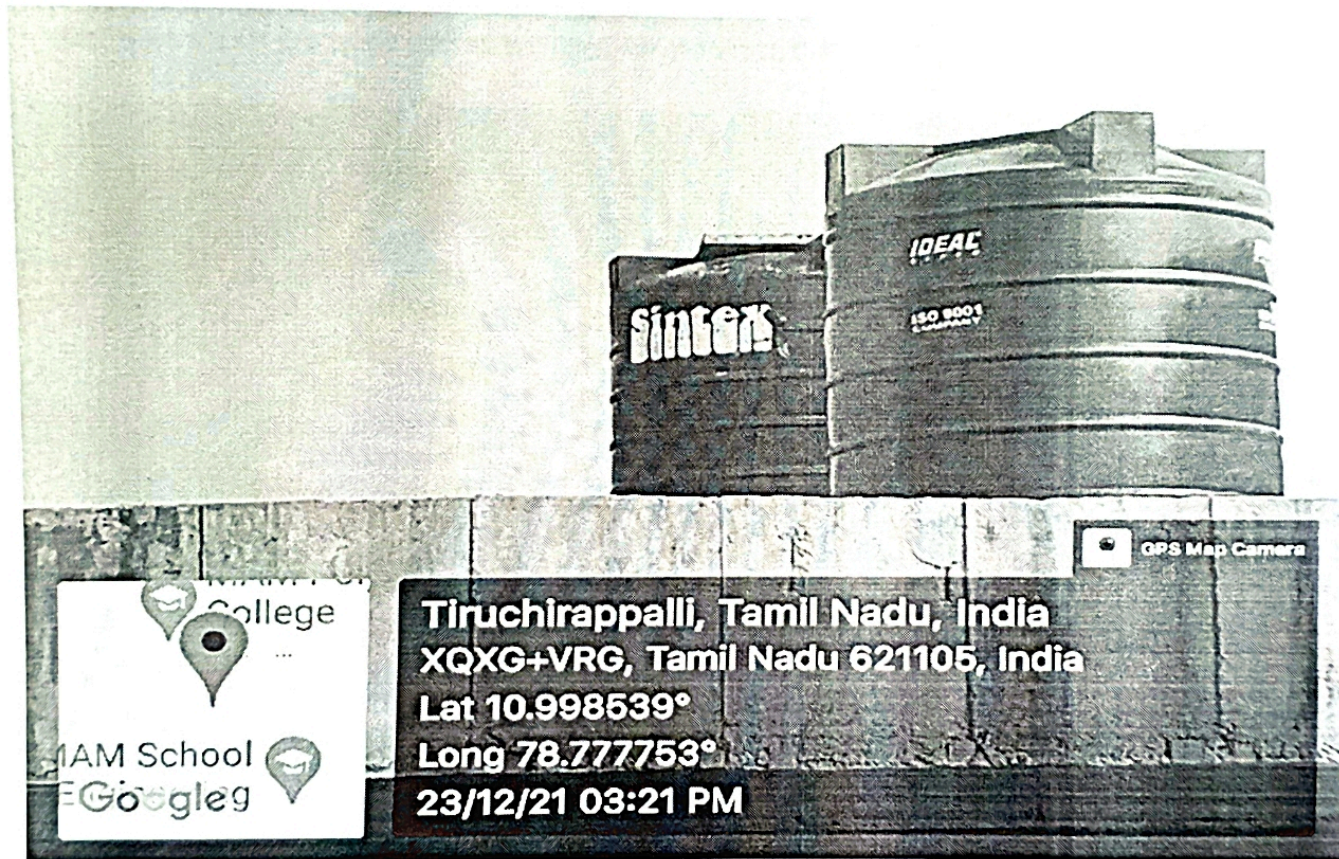
(ACCREDITED BY NAAC)

(Approved by AICTE, New Delhi and Affiliated to Anna University, Chennai)

SIRUGANUR, TRICHY - 621 105

www.mamse.in

WATER TANK



PRINCIPAL

PRINCIPAL

M.A.M. SCHOOL OF ENGINEERING
SIRUGANUR, TIRUCHIRAPPALLI-621 105.



M.A.M. SCHOOL OF ENGINEERING

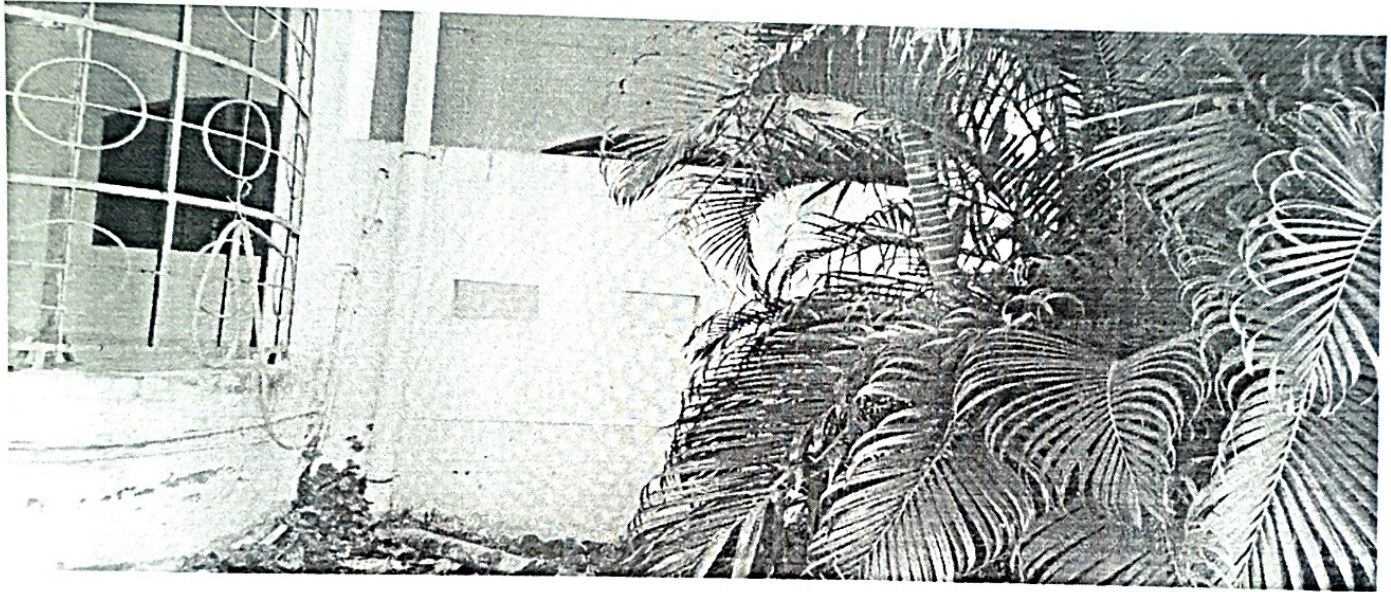
(ACCREDITED BY NAAC)

(Approved by AICTE, New Delhi and Affiliated to Anna University, Chennai)
SIRUGANUR, TRICHY - 621 105

www.mamse.in

WASTE WATER RECYCLING

Waste Water from the wash basins are used for watering the plants



PRINCIPAL

PRINCIPAL

Scanned By Scanner Go
M.A.M. SCHOOL OF ENGINEERING
SIRUGANUR, TRICHY - 621 105



M.A.M. SCHOOL OF ENGINEERING

(ACCREDITED BY NAAC)

(Approved by AICTE, New Delhi and Affiliated to Anna University, Chennai)
SIRUGANUR, TRICHY - 621 105

www.mamse.in

MAINTENANCE OF WATER BODIES AND DISTRIBUTION SYSTEM IN THE CAMPUS

RO PLANTS



PRINCIPAL

PRINCIPAL
M.A.M. SCHOOL OF ENGINEERING...
SIRUGANUR, TIRUCHIRAPPALLI-621 105.



M.A.M. SCHOOL OF ENGINEERING

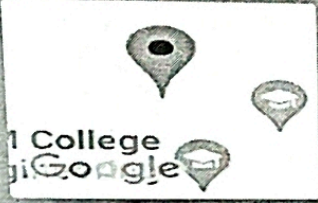
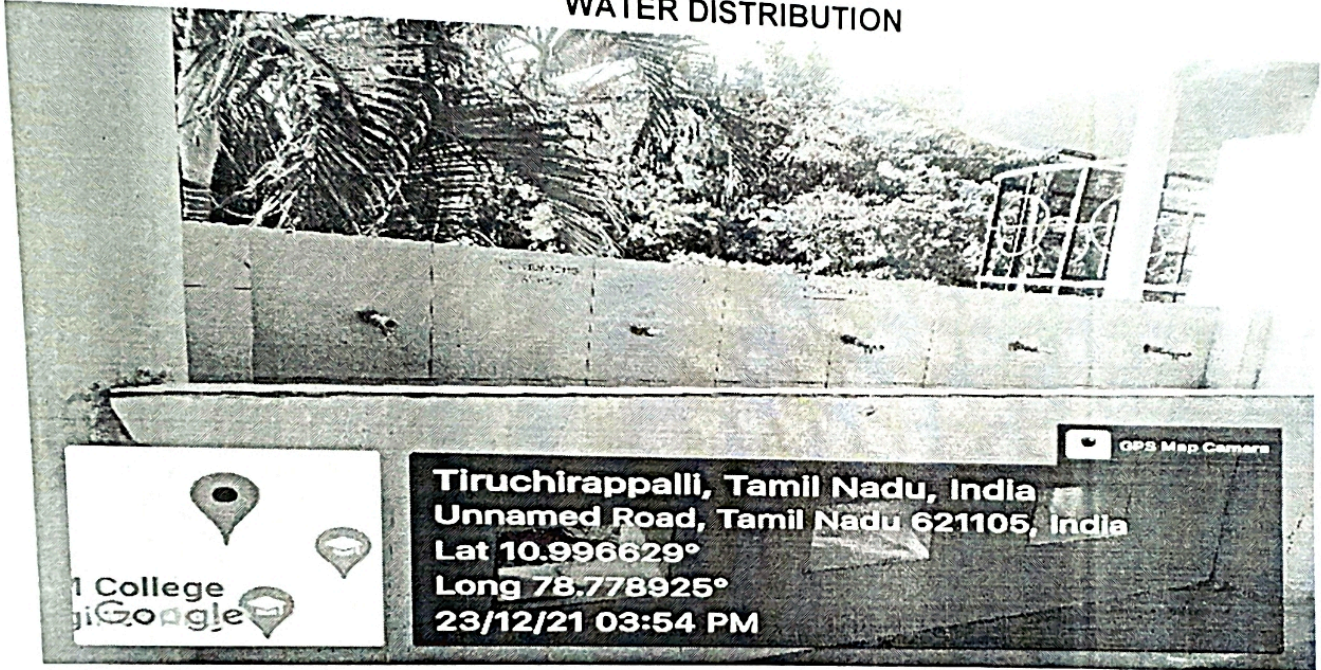
(ACCREDITED BY NAAC)

(Approved by AICTE, New Delhi and Affiliated to Anna University, Chennai)

SIRUGANUR, TRICHY - 621 105

www.mamse.in

WATER DISTRIBUTION



Tiruchirappalli, Tamil Nadu, India
Unnamed Road, Tamil Nadu 621105, India
Lat 10.996629°
Long 78.778925°
23/12/21 03:54 PM

COOL WATER FILTER



emple pirivu



Google

Tiruchirappalli, Tamil Nadu, India
S R Complex Siruganur, Tamil Nadu 621105, India
Lat 11.00914°
Long 78.791006°
23/12/21 03:54 PM

PRINCIPAL

PRINCIPAL
M.A.M. SCHOOL OF ENGINEERING
SIRUGANUR, TIRUCHIRAPPALLI-621 105.